

2024 Proposed Budget

WASHINGTON COUNTY SOIL & WATER
CONSERVATION DISTRICT

WASHINGTON COUNTY SWCD MISSION:

To promote conservation and development of our soil, water and related natural resources through education, public information, leadership, technical assistance, and development of innovative programs for Washington County.

DUTIES OF THE WASHINGTON COUNTY SWCD:

The SWCD assists residents and landowners in Washington County to reduce soil erosion and promote clean water. Supervisors and staff help secure funds to address resource concerns in the county, help direct landowners to the appropriate government agency for assistance and coordinate meetings that bring together local landowners and government agencies. The SWCD is prepared to inform and assist all segments of our society, both rural and urban.

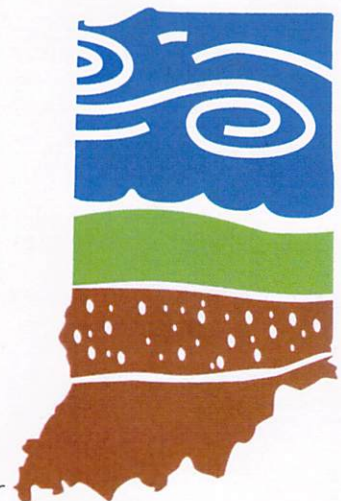
For every dollar invested by the county in 2022, the Washington County SWCD leveraged **\$37.56** in response for landowners and producers throughout the county. The SWCD multiplies the county's investment by utilizing grants with federal and state dollars brought in to improve local agriculture.

2023 Washington County SWCD Supervisors

Mike Ponsford—Chairman
Todd Armstrong—Vice Chairman
Chris Fordyce—Secretary
Rhonda Johnson and Aaron Walker—Members

Office Staff

Nevada Wagers—Office Manager
Cora Brown —SWCD Technician
Amber Drossart—Twin Creek-Lick Branch Watershed Coordinator
Cassidy Steininger — South Fork-Blue River Watershed Coordinator
Dawn Humphrey —Administrative Support Technician



PROPOSED BUDGET FOR 2024:

Washington County Soil and Water Conservation District

BUDGET ITEM	AMOUNT
District Office Manager Salary	\$36,360.00
SWCD Technician	\$36,360.00
Operating Expense	\$2,000.00
Administrative Support Technician	\$15,000.00
10-ft John Deere No Till Grass Drill	\$10,000.00
TOTAL AMOUNT REQUESTED FOR WASHINGTON COUNTY SOIL & WATER CONSERVATION DISTRICT	\$99,720.00

The Washington County SWCD would like to request **\$99,720.00** from the Washington County Council to be used for the following:

District Office Manager Salary - This position provides administrative support to the Washington County SWCD Board of Supervisors in carrying out the District's programs in conformance with the purpose of the District as defined in the Indiana District Law (IC 14-32). Duties include: serve as recording secretary for SWCD Board Meetings, prepare financial reports for board meetings, receive and disburse all funds according to guidelines in the SWCD Operations Manual and Indiana State Board of Accounts, prepare annual financial reports required by State Board of Accounts, coordinate annual meeting, coordinate rental equipment and assist the Natural Resources Conservation Service (NRCS) with conservation implementation.

SWCD Technician Salary - This position coordinates Clean Water Indiana (CWI) county cost-share assistance programs and assists with SWCD education, outreach, and promotional efforts. The SWCD Technician assists the District Conservationist and watershed coordinators in the office to complete conservation planning, contracts, tools, and technical assistance for all applicable programs including 319 Environmental Quality Incentive Program (EQIP), Lake and River Enhancement (LARE), Conservation Security Program (CSP), and Conservation Reserve Program (CRP). The SWCD Technician completes training and field work to earn Certified Conservation Planner certification through the Natural Resources Conservation Service. **This is currently a third deputy position. The SWCD would like to request that this be changed to second deputy.**

Operating Expense

- Mileage/Professional Development

The SWCD supervisors, office manager, and technician actively engage in trainings/workshops in order to be kept up-to-date on the latest conservation efforts and how to apply those to our county.

- Education/Outreach

The SWCD is involved with the following educational program: Earth/Arbor Day, South Central Regional Envirothon, Farm Bureau Ag Day & Kid's Day, Soil Contests, Fall Conservation Field Day, Forestry Field Day, Women's Forum, Beginning Farmer's Breakfast, Conservation Workshops, Home & Garden Show. Educational materials are also available at the SWCD office.

- Supplies/Equipment Insurance

Office supplies, postage and SWCD rental equipment insurance.

ADDITIONAL FUNDING REQUEST

Administrative Support Technician - This position provides administrative and technical assistance to the NRCS District Conservationist (DC), SWCD Board and technical staff. The position will address administrative and technical assistance as needed to carry out the Farm Bill programs including but not limited to Environmental Quality Incentive Program (EQIP); Conservation Stewardship Program (CSP); Conservation Reserve Program (CRP); and other local financial conservation programs including but not limited to Clean Water Indiana (CWI); Lake and River Enhancement (LARE); and other conservation technical assistance (CTA) requested by the SWCD Board and the DC.

10-ft John Deere No-Till Drill - The Washington County SWCD would like to ask for additional funding of **\$10,000.00** to purchase a 10-ft John Deere no-till drill with a main box and grass seed attachments. This drill will benefit Washington County landowners and other surrounding counties by providing an affordable and reliable drill for use. Currently, residents frequently rent drills from SWCDs in surrounding counties. In 2022, the SWCD reimbursed drill users the out of county expense of renting the drill.

Additional benefits of an in-county drill are:

- Decreased soil disturbance leading to improved soil structure, conserved organic matter, increased water infiltration and improved biological activity.
- Improved germination of seed compared to broadcasting.
- Increased options for small seed planting, including beans, small grains and grasses.
- Increased likelihood of cover crop planting and diversity of cover crop species.
- Back up options when a land user's own equipment is not functioning or suitable for the planting task.

The SWCD is pursuing a \$50,000 grant from Clean Water Indiana and these funds would help off-set the remaining portion of the drill expense. Funds collected from the drill rental will go towards the maintenance and upkeep of the drill. The machine will be serviced by a local equipment specialist.



GRANTS ADMINISTERED BY THE WASHINGTON COUNTY SWCD:

South Fork-Blue River Watershed Project (SFBR)

The South Fork-Blue River Watershed covers 81,000 acres through southern Washington County, extending into Harrison, Clark, Floyd, and Scott counties. The First Implementation Phase was completed, and the Second Implementation Phase began in 2021.

2022 Statistics

Producers/Landowners served - 15
Program Funding for Best Management Practices (BMPs) - \$48,574.21
Producer/Landowner Match - \$29,168.33
Community & Educational Match - \$34,506.47

Lake and River Enhancement Grants (LARE)

Currently, a Lake and River Enhancement grant is ongoing in the SFBR watershed. During 2022, funding totaled \$15,616.84. The remaining funds have been allocated. This grant will end in 2023.

The SWCD received a second LARE grant to fund cost-share in the Mill Creek-Blue River Watershed which began in 2022. During 2022, funding totaled \$7,903.75. The remaining funds have been allocated. This grant will end in 2024.

Twin Creek-Lick Branch East Fork White River Watershed Project (TCLB)

This project was first approved as a 205j grant from the Indiana Department of Environmental Management (IDEM) in September of 2021. The 205j grant will conclude in January 2024 with a completed Watershed Management Plan (WMP). Washington County SWCD is now pursuing funds to implement a cost-share and education program in the watershed with a projected start date of October 2024. The project covers approximately 177,000 acres and will benefit residents and producers in Washington, Jackson, Lawrence, and Orange counties. The request for funds for this grant is \$370,250.



The SWCD administered grants through **Clean Water Indiana (CWI)** to provide cost-share and education to residents of Washington County in 2022. These grants focused on improving soil health by installing BMPs that address crops, livestock, and wildlife.

2022 Statistics

Producers/Landowners served - 26
Program Funding for BMPs - \$28,732.15
Producer/Landowner Match - \$50,328.46

Producers used this funding to plant cover crops; install heavy use area protection; and access roads. Additional funds are available in 2023 to assist with the installation of these and other conservation BMPs. These funds are available through a Healthy & Sustainable Pastures program and an Urban and Residential Invasive Species Removal program.

The SWCD will pursue further Clean Water Indiana funding in 2023, to secure more cost-share funds for Washington County producers and land users to install BMPs beginning in 2024 and to purchase a no-till drill for use by the agricultural community.

The SWCD has also received a grant to employ an Administrative Support Technician through the National Association of Conservation Districts (NACD). This grant provided \$35,595 in salary for this position, which assists with Farm Bill Programs including EQIP, CSP, and CRP. Additionally, the position assists with administrative assistance with CWI, LARE, and other requests for conservation technical assistance including file maintenance, report creation, and correspondence.



**National Association of
Conservation Districts**



Washington County Nutrient and Sediment Load Reductions: 2022

Accomplished By Private Land Owners and The Indiana Conservation Partnership



Sediment Reduced by 215,791,338 lbs.

Enough to Fill 1,079 Train Cars



Phosphorus Reduced by 108,974 lbs.

Enough to Fill 109 8' Truck Beds

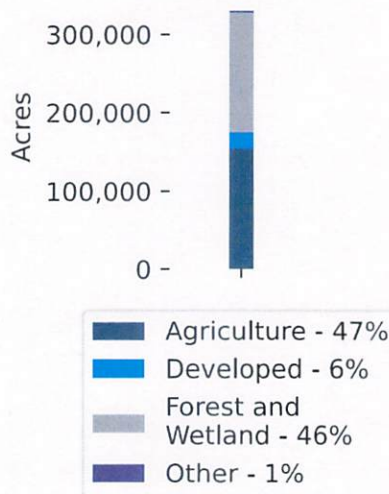


Nitrogen Reduced by 230,183 lbs.

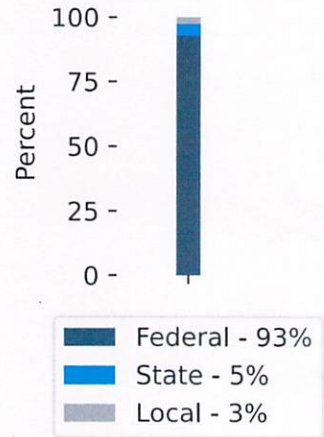
Enough to Fill 230 8' Truck Beds



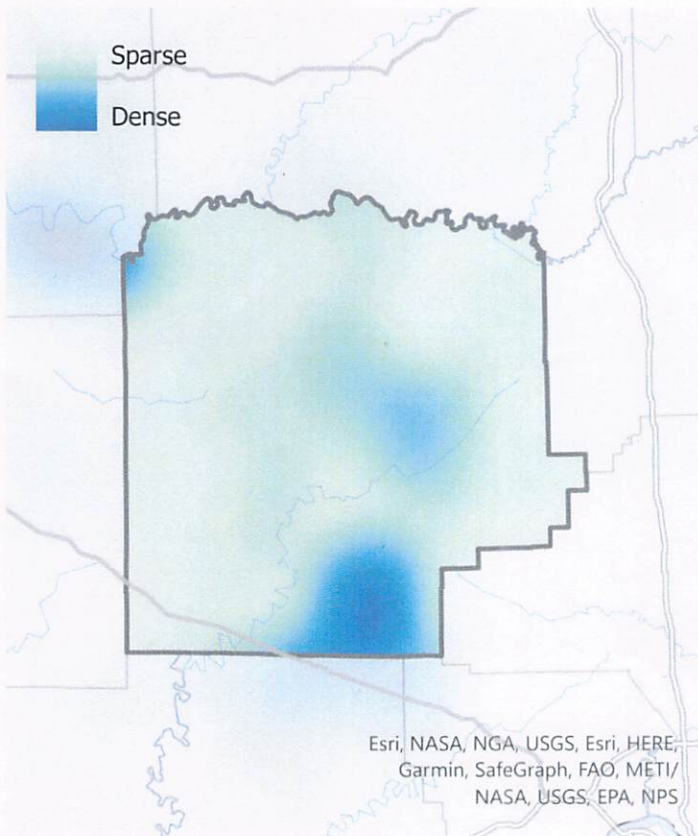
Comparison of Land Use Across County



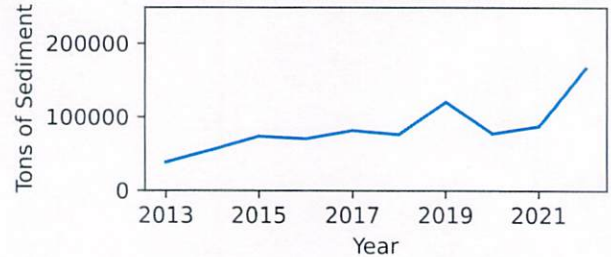
Conservation Funding By Source



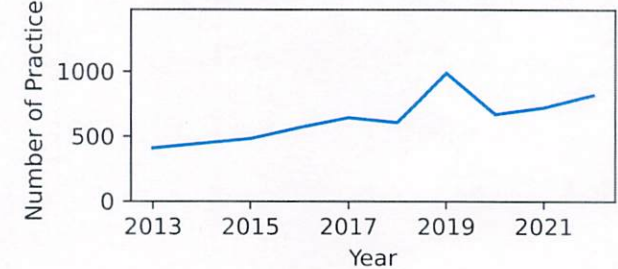
Distribution of Sediment Reduction



Sediment Load Reductions Over Time



Practices Installed Over Time





Washington County Nutrient and Sediment Load Reductions: 2022

County Conservation Funding

County	Local Total	State Total	Federal Total	Total Funding
Washington	\$55,226	\$106,887	\$2,013,562	\$2,175,675

County Land Use

County	Agricultural Acres	Developed Acres	Forest and Wetland Acres	Other Acres
Washington	155,380	19,947	153,304	1,902

County Sediment and Load Reductions

Year	Practices Installed	Active Practices	Sediment Reduction (lbs)	Phosphorus Reduction (lbs)	Nitrogen Reduction (lbs)
2013	408	408	77,622,856	36,921	73,865
2014	445	548	111,135,563	52,706	105,417
2015	483	656	147,234,451	70,957	141,904
2016	569	811	140,728,670	67,719	135,441
2017	646	945	162,997,545	79,049	158,105
2018	609	951	152,096,479	73,838	148,214
2019	988	1,404	241,646,113	115,012	230,651
2020	673	1,188	154,485,338	74,485	149,546
2021	725	1,301	174,414,381	88,986	190,205
2022	821	1,490	215,791,338	108,973	230,182

The Indiana Conservation Partnership (ICP) is comprised of eight Indiana agencies and organizations who share a common goal of promoting conservation. To that end, the mission of the Indiana Conservation Partnership is to provide technical, financial, and educational assistance needed to implement economically and environmentally compatible land and water stewardship decisions, practices, and technologies.

Funding data is collected annually by ISDA. Each agency in the ICP reports their programs based upon the fiscal year that their agency follows (i.e. Calendar, Federal, State). Local conservation funding data is collected through the annual financial reports submitted by Indiana's 92 soil and water conservation districts (SWCDs) to ISDA and includes salary and fringe information paid by the county for SWCD employees.

Land use data is estimated by the USDA National Agricultural Statistics Service (NASS) CropScope – Cropland Data Layer (CDL). This dataset is crop specific land cover data layer derived from satellite imagery. The data is aggregated annually by county by ISDA.

Load reductions are calculated using the EPA's Region 5 Load Reduction Model. Practices do not include the many unassisted practices designed and installed by private landowners without ICP assistance. Data is provided by Indiana State Department of Agriculture, Indiana Department of Natural Resources, Indiana Department of Environmental Management, Indiana Soil and Water Conservation Districts, and the USDA Natural Resource Conservation Service.

*Distribution of sediment reduction depicts a heat map of the amount of sediment reduced by ICP practices in 2022.